

Central Ohio Section Executive Committee

Chair

Greg Soller, P.E., PMP
AEP
(614) 799-8502
email: g_soller@hotmail.com

Treasurer

Robert Honaker
Diamond Power Specialty Co.
(740) 687-4011
email: RWHonaker@diamondpower.com

Student Relations Chair

Ramin Sadeghian
Owens Corning
email: Ramin.Sadeghian@owenscorning.com

Web Site Coordinator

Carl E. Jaske, P.E., Ph.D.
CC Technologies (A DNV Company)
(614) 761-1214
email: cjaske@cctlabs.com

Program Chair

Parimal P. More
CC Technologies (A DNV Company)
Ph # 614.761.1214
email: pmore@cctechnologies.com

Secretary & Newsletter Editor

Colin Scott, PhD, PEng
CC Technologies (A DNV Company)
email: CScott@cctechnologies.com

Chair of OSU Student Section, 2004-2005

Tim Ganger
The Ohio State University
email: ganger.4osu.edu

Inside This Issue:

- 1 **E-Library Expands Titles**
- 2 **Water Quality Conference in Las Vegas**
- 3 **Applicants Needed: ECLIPSE**
- 4 **Diversity Action Grants Now Available**
- 5 **Early Career Forum**
- 6 **Local Section News**

Chairs Message

Hello everyone, I hope you all had a safe and enjoyable summer.

Congratulations to Mel Helmich and his diligence to have the Cooper-Bessemer GMV Integral Angle Compressor recognized as an ASME Landmark. Be sure to read more about the latest landmark by reading the brochure on our website. This event included over 100 people attending the ceremony in Mount Vernon and recognized another significant engineering achievement by Cooper Industries.

This year, we are looking forward to developing our professional relationships with several other technical societies in the area in our effort to broaden the reach and benefits ASME has to offer. As we continue to work through the significant changes ASME is undergoing, we look forward to developing a stronger and more dynamic section that will provide many opportunities for you to participate. I look forward to meeting many new faces this year.

If you are interested in attending any of our Executive Committee meetings, please let any of the officers know. We meet on the first Thursday of each month at CC Technologies in Dublin, Ohio. Meeting time is at 6:00pm.

Greg Soller, P.E.

Alan Needleman Honored by ASME



Dr. Alan Needleman of Providence, R.I., a Florence Pirce Grant university professor and professor of engineering at Brown University, was honored by ASME for his seminal contributions in the area of nonlinear mechanical response and failure of solids, structures and materials. He received the Daniel C. Drucker Medal at the Needleman-Tvergaard Symposium, recently held at Brown University. Dr. Needleman, an ASME Fellow, served on the Applied Mechanics Division's Executive Committee for five years and chaired the committee in 2000. He has authored/co-authored nearly 300 publications and has been recognized by ISI (Science Citation Index) as a highly cited author in both the fields of engineering and materials science. He earned his master's and Ph.D. in engineering at Harvard University.

Applicants Needed: ECLIPSE

Applications for the **Early Career Leadership Internship Program Serving Engineering** are due by Dec. 1 for internships beginning at the 2007 Summer Annual Meeting. Women, non-traditional engineers and engineers in the workforce between three and 10 years are encouraged to apply.

For additional information and an application, go to http://www.asme.org/Governance/Volunteer/Early_Car

Check Out ASME News Online!

ASME News Online is an electronic resource for those who want to learn about ASME and the dozens of interesting programs and activities the organization and its members are involved in each year. ASME News also includes information and links pertinent to the governance of ASME, columns and features, include a monthly letter from ASME President Terry Shoup, industry news, calendars and events and more. Don't miss reading the September edition on www.asme.org

ASME E-Library Expands to 75 Titles – Free to members!

In early Sept. 2006, ASME members gain access to 75 interactive, user-friendly references available on the newly expanded ASME e-Library powered by Knovel. To take advantage, members simply access ASME.org and log onto the members-only page. Members pay no charges for access.

Selecting from a large, diverse collection that includes *Mark's Standard Handbook for Mechanical Engineers*, *Handbook of Materials Selection*, *Mechanical Engineer's Reference Book*, *Structural and Stress Analysis*, *Pipeline Rules of Thumb*, *Mechanics of Materials*, and the *Manufacturing Engineer's Reference Book*, members enjoy additional benefits unavailable from printed references. Using embedded analysis software, they quickly locate data, analyze it, and export the results. For a complete listing of available titles, visit the e-library pages in Members only.

For the initial session on the expanded ASME e-Library, each individual can log onto the member-only page and register. For future sessions, the individual can simply log onto the members-only page and click on an icon, which opens the collection for use.

ASME To Hold Conference on Water Quality in Las Vegas



ASME's Environmental Engineering Division will sponsor the 1st Water Quality, Drought, Human Health and Engineering Conference, Oct. 18-20, 2006, in Las Vegas, Nev.

The forum will address advances in water quality technology and provide solutions-based discussion and information exchange regarding activities and plans for improving the quantity and quality of water, the impact on human health and engineering and current policies from state and federal agencies. For additional information or to register, visit <http://www.asmeconferences.org/water06/>

2007 Johnson & Johnson Consumer Companies, Inc. Medal



The Johnson & Johnson Award, first presented in 2005, recognizes outstanding contribution to the promotion of diversity and inclusiveness within the engineering community. This award is open to ASME members and individuals who are members of a recognized/engineering or professional society.

The deadline for all nominations is Feb. 1, 2007. For additional information and forms, visit http://www.asme.org/Governance/Honors/SocietyAwards/Johnson_Johnson_Consumer.cfm, or contact ASME staff contact: Mary James Legatski, legatskim@asme.org

Diversity Action Grants Now Available!

Encourage your local ASME student section to apply for a Diversity Action Grant by the Nov. 1 deadline! This program enables ASME Student Sections to sponsor events which:

- Promote the inclusion of women and under-represented minorities in ASME Student Sections and in mechanical engineering,
- Inspire K-12 students to excel in science, technology, engineering and mathematics (STEM) education and/or,
- Assist minority - and/or women-owned businesses solve engineering design problems.

For more information, visit: http://www.asme.org/Communities/Diversity/Diversity_Action_Grant.cfm or contact Mary James Legatski at legatskim@asme.org

Call For Applications – ASME/ABET

Have an interest in undergraduate education? If so, we need your help! We are currently seeking for new ASME/ABET Program Evaluators.

Role of a Program Evaluator

Contribute to the continuous improvement of mechanical engineering, mechanical engineering technology, or related degree programs by evaluating them against a set of criteria. These criteria outline the requirements for faculty, facilities, curriculum, and other key program areas. In doing so, Program Evaluators help to assure the quality and vitality of Mechanical Engineering and Mechanical Engineering Technology degree programs. It's a lot of work, but it's also very professionally and personally rewarding.

Minimum Qualifications:

- Demonstrates interest in improving education.
- Demonstrates desired competencies outlined in ABET's Competency Model.
- At least one degree in mechanical engineering, mechanical engineering technology, or a closely related discipline. Graduate degree preferred.
- 10+ years of work experience. Management experience a plus.
- ASME member or willingness to become a member prior to applying to serve as an evaluator.

How to Apply

Applications are due by **Oct. 15**. To obtain an application and for more information, please visit http://www.asme.org/Education/CertifAccred/Become_Evaluator.cfm. Minorities, women, and engineers working in industry are especially encouraged to apply.

For more information, contact Amy Bentow, manager, Education at bentowa@asme.org or 212-591-7880.

ASME's **e-mentoring program** is wonderful opportunity for Early Career members to receive guidance from an experienced engineer practicing in the field. Mentors are in the unique position of helping early career get the right training, find the right niche in mechanical engineering and allowing for a smoother transition into the working world.

Visit

<http://htmlmail.asme.org/ementoring/index0906.html>

Early Career Forum to Focus On Biotech/Pharma Industry

If you are interested in a career in the growing biotechnology and pharmaceuticals industry, then the ASME Biotech/Pharma Early Career Forum is a good place to start.

The Forum will address career options, provide case studies on current industry trends and show some exciting career opportunities in this growing industry. The Early Career Forum will be held Sept. 11, 2006, at the Sheraton Philadelphia City Center Hotel in Philadelphia, Pa. The event will be held in conjunction with the ASME Design Engineering Technical Conferences, Sept. 10-13.

Professionals in the early stages of their careers in project, design or support functions are encouraged to attend. To register or for more details visit <http://asmeconferences.org/IDETC06/BiotechPharma.cfm> or call 1-800-843-2763.

Bill Bees of Cangene Will Keynote The 19th Annual ASME Bioprocess Technology Seminars



Bill Bees, senior vice president, Operations, at Cangene manufacturing facilities will deliver the keynote address at the 19th Annual ASME Bioprocess Technology Seminars, to be held Oct. 23-25 in Montreal, Canada.

Bees has over 25 years of experience at Cangene and is widely recognized in industry and government circles as an expert in blood and plasma safety, manufacturing and risk management. This year, the seminar will introduce a new 3-day training course entitled, "Aseptic Fill and Finish for Biopharmaceuticals." The conference will also include desktop exhibits, information exchange and an industry tour of Canada's National Research Council's Biotechnology Research Institute. For more information, or to register, visit: <http://www.asmeconferences.org/bioprocess06/index.cf>

A Two-day *Career Enhancement* Program *For Early-Career Engineers* Nov. 5–6, 2006 Chicago Hilton, Chicago, Ill.

Early Career Forum

Join your engineering peers at the 2006 Early Career Forum, taking place in conjunction with the ASME International Mechanical Engineering Congress & Exposition. The Forum will give you first hand advice and information on issues relevant to your career. Senior-level engineering students will also benefit from this important event, featuring top industry pros presenting key trends, opportunities, and expectations in the field.

Early Career Development Track

Participate in the one-day only Early Career Forum program (advance fee: \$25 or onsite fee: \$30), or get even more valuable insights when you attend the first day along with the second day of technical sessions (advance fee: \$150/\$200 or onsite fee: \$175/\$225 – member/nonmember rates).

Get details at: http://www.asme.org/Communities/EarlyCareer/Forum/Upcoming_Events.cfm

Local Section News

Student Section Success!

The Central Ohio Section Executive Committee would like to send out congratulations to all the students in the Ohio State Student Section for their success at the Regional Conference in Michigan over the summer. In February, five members of the Student Section participated in the National Old Guard Oral Competition at Ohio State University. That night's winner was Steven Hart. He went on to speak in the Regional Competition at Michigan State in May, and won that event too!! Steven will also compete in the National Competition. We all wish him well. The Student Section was also successful in winning an impromptu design competition. Well done, all.

Are there any Buckeye fans out there? The Student Section is hosting a tail-gate party during the Iowa (away) game on Sept 30th. Contact Tim Ganger at ganger.4@osu.edu 614-313-3735 for details. Go Bucks!!

Section Future Activities

Now that the summer is over, we are hoping to pick up where we left off last spring. Last year was very successful, with a variety of events for our local members. We visited Nationwide Arena for a behind the scenes tour, we heard stories of the early history of flight, we learned of a variety of research activities from our student members during the Old Guard Oral Competition, we learned some useful Project Management techniques during Greg Soller's tutorial, and we met with members of the National Association of Corrosion Engineers and American Society for Materials. We are hoping to plan some more activities for the upcoming year, and as always, members are welcome to make suggestions. And if anyone is interested in joining the Executive Committee, we meet at 6pm on the first Thursday of each month at CC Technologies in Dublin (5777 Frantz Road at Rings Road). Members are invited to joins us.

Our first event of the year is an invitation to join the local ASM chapter at their BBQ and visit to the Motorcycle Hall of Fame and Museum. See below for details.

Executive Committee Member Activities:

As a member of the Committee on Student Development, Ramin Sadeghian is charged with expanding our global student operations. He's currently working with teams in Venezuela, Ghana, Turkey & Singapore. Also, on a subcommittee for Early Career Engineers, Ramin must deliver an Early Career Forum in his current location of Columbus, Ohio.



Columbus Chapter

The Materials
Information Society

Date: September 20, 2006

Location: Motorcycle Hall of Fame and Museum

13515 Yarmouth Drive, Pickerington, Ohio 43147

Phone no. 614-856-2222 ext. 1234

Agenda: (Something a little different to kick off our Section year!) 1. Motorcycle Hall of Fame and Museum Tour: 6:00pm-7:00pm. We'll start the evening with a guided tour of the Motorcycle Hall of Fame and Museum. The tour will feature "Motocross America". A great opportunity to see materials in action and the evolution of technology applied to motocross bikes.

2. BBQ Dinner: 7:15pm-7:45pm

Next we'll move outside and enjoy a BBQ (location will be under cover, so plan to attend rain or shine!) by "Catering by Scott".

3. Presentation: 7:45pm-8:15pm

Guest Speaker: Mr. James Kerker

Privateer/Professional Road Racer-AMA Superbike Series Engineer, Honda R&D Americas, Raymond Ohio

Mr. Kerker will present: "Evolution of Superbike Technology and Effect on the Performance of Production Motorcycles"

Presentation will touch on the history of MotoGP road racing and the major competitors over the past 50 years. A review of the major technological improvements and the effects of material advancements on vehicle performance will be made. The link between race technology and performance of production machines will be described based on the speakers experience. Finally, Mr. Kerker will explain the current "state of the art" as it relates to AMA Superbikes and display his Honda CBR1000RR and CBR600RR race machines.

Cost: \$15 for Members and Guests, \$5 for Students

Reservations: Contact Greg Soller (program@centralohioasme.org) with questions, or sign-up through the Central Ohio ASME website at <http://www.centralohioasme.org/MeetingReservationForm.html>.



GMV Integral Angle Compressor Landmark

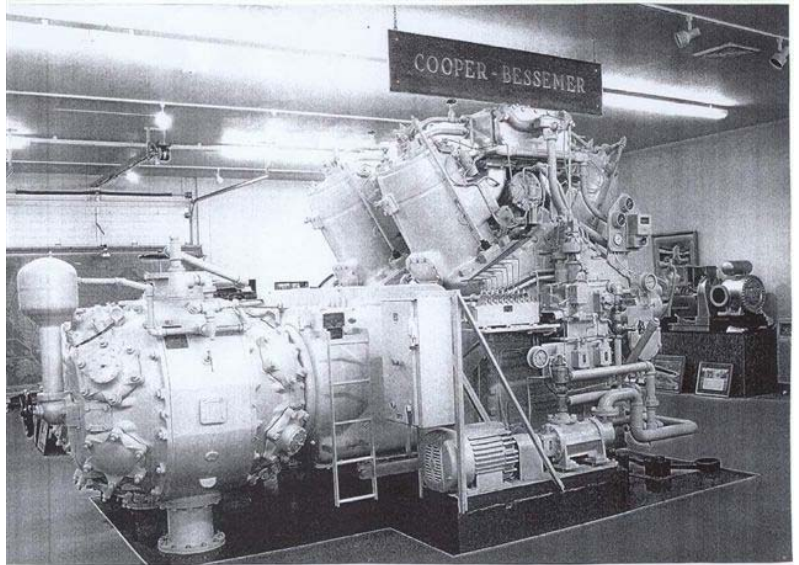


Jim Gibson, left, Knox County Historical Society Museum director, accepts a plaque from Dick Pawliger, ASME Life Member, Saturday in a ceremony at the museum on Harcourt Road. The award signifies the contribution the Cooper-Bessemer Co. made in the field of natural gas compression and transmission with the long-lived GMV integral-angle gas engine compressor. (Photo by Virgil Shipley)

Though not unprecedented, Pawliger said that it is rare for two such landmarks to be located at the same place, showing the importance of the Cooper-Bessemer legacy in Knox County and in the engi-

neering world.

The Cooper Co. began in Mount Vernon 173 years ago, merging into Cooper-Bessemer in 1929. Rolls-Royce took over operation of the local Cooper facility in 1999.



Pictured left to right:

Ken Stevenson, Past President - Cooper Industries, Robert Woodward, Past VP Region V, Greg Soller, Chair - Cent. Ohio Section, Mel Helmich, Life Fellow - ASME and nominator, Andrew Pope, Chair - Int. Combustion Engine Division, Dick Pawliger, History & Heritage Committee, James Gibson, Museum Director.